



## Identifying a Problem

Every day, foodservice industry professionals spend countless hours manually importing Autoquotes™ estimates into Quickbooks™ for accounting purposes. The man hours it takes to do this can add up very quickly. It can cost companies thousands of dollars a year. This was the old way to do business. Times have changed...

### Introducing A2QB - The Autoquotes™ to Quickbooks™ Integration Software

A2QB boasts a fast, easy-to-use interface that is packed full of options and flexibility. It can save your company valuable time and money on every estimate. Our Engineering and Product Development team has created A2QB to be dynamic enough to adapt to this ever-changing industry while flexible enough to accommodate a vast array of requirements.

## Bridging the Gap

Do you have your products, descriptions, taxes, customers, jobs, accounts, vendors, or pricing set up in Quickbooks™? It is okay if you don't. A2QB does all the work for you! It imports all of your line items from your Autoquotes™ estimates and creates objects in Quickbooks™. A2QB has truly taken automation to a new level. Would you like to create custom fields? A2QB takes the data from specific fields in Autoquotes™ that will not map directly into Quickbooks™ and defines custom fields in Quickbooks™. This will allow you to select the specific data from your Autoquotes™ estimate and map it into that field. This is flexibility right at your fingertips.

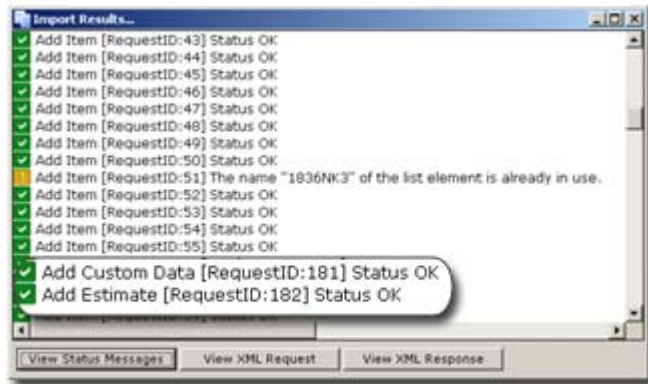
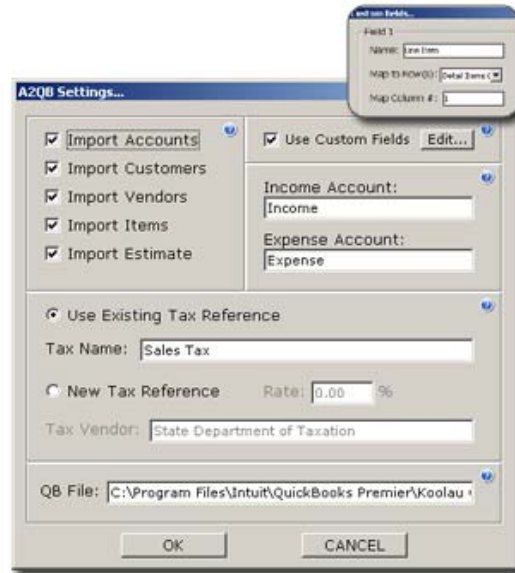
## Embracing the Future

What's in store for the A2QB application? The market and customer suggestions will be the influencing bodies there. Meanwhile, our proficient Engineers and Product Development staff are constantly working on the next round of new innovations. A few food industry professionals have already identified the next set of requirements and we have listened long and hard to them. So our attention is yours, our minds are open. The possibilities are endless. If you have any other ideas or problems that you think we could help you with please let us know.

## Come Check it Out

For more information on A2QB or to download a demo version, please visit us online at <http://www.a2qb.com>. You may also contact our sales representative, David Elliott, at (808) 779-7163 or email us at [sales@a2qb.com](mailto:sales@a2qb.com).





Name	Description	Type	Account
+Ace Coolers		Non-inventory Part	Income
+ACE	Deliver and install walk-in cooler to m	Non-inventory Part	Income
+Advance Tabco		Non-inventory Part	Income
+74S-60	Hand Sink, wall model, 14" wide x 10	Non-inventory Part	Income
+M5-245	Work Table, 24" wide top, with splash	Non-inventory Part	Income
+TA-11B	Sink Welded Into Table Top, 16" X 2	Non-inventory Part	Income
+WS-10-60	Shelf, wall-mounted, stainless steel,	Non-inventory Part	Income
+Arctica Showcase		Non-inventory Part	Income
+ARC-OPT	Mirror finish on end divider glass par	Non-inventory Part	Income
+ART-OPT	Mirror finish on rear sliding doors.	Non-inventory Part	Income
+RH-57-52	Refrigerated high volume showcase.	Non-inventory Part	Income
+RH-96-52-EH	Refrigerated high volume showcase.	Non-inventory Part	Income
+Burno-Matic		Non-inventory Part	Income
+1,52PR-PP	00990.0002 Coffee Server, 1.12 gal	Non-inventory Part	Income
+RW51	12003.0014 Warmer stand, 41 adju	Non-inventory Part	Income
+SINGLE CD	35000.0000 Coffee Brewer, Portable	Non-inventory Part	Income
+TDS-5	33000.0001 Iced Tea Dispenser, s/s	Non-inventory Part	Income
+TL9Q	24400.0000 Automatic Iced Tea line	Non-inventory Part	Income
+CMA Dishwashers		Non-inventory Part	Income
+C	Energy Miser Dishwasher, door type	Non-inventory Part	Income
+22CMA0001M001	115v/56/1-ph, 13.0 amps	Non-inventory Part	Income
+DAVE WHIRPLE SHEET METAL		Non-inventory Part	Income
+PP-65	Custom s/s pass shelf approximately	Non-inventory Part	Income
+PP-53	Custom s/s wall shelf approximately	Non-inventory Part	Income
+PP-73	Custom s/s wall shelf approximately	Non-inventory Part	Income
+PP-74	Custom s/s clean dishtable sized to fit	Non-inventory Part	Income
+PP-78	Custom s/s soiled dishtable, with bu	Non-inventory Part	Income
+PP-79	Custom s/s slant rack shelf.	Non-inventory Part	Income
+PP-90	Deliver and install custom s/s items,	Non-inventory Part	Income
+Duracold		Non-inventory Part	Income
+PP-1	Custom walk-in cooler approximately	Non-inventory Part	Income
+PP-2	Refrigeration system for walk-in cool	Non-inventory Part	Income
+Erosoun		Non-inventory Part	Income

Item	Description	Qty	Unit Price	Total Price	Total
DuracoldPP-1	Custom walk-in cooler approximately 6-10'W-10' high, 4000 gal.	1	2,240.00	2,240.00	5,584.00
DuracoldPP-2	Refrigeration system for walk-in cooler to control condensing unit, the oil, expansion valve, sight glass, solenoid valve, and all parts for a reliable medium temp system. One year parts, 90-day labor, and five year compressor warranty. Expensive fan coil to be included with this item.	1	1,340.00	1,340.00	320.00
Petro 104982	Super Erecta Shelf, wire, 12" W, 48" L, Melbond 3 (corrosion-resistant) finish, plastic 3/8" shelves are included in each carton.	9	29.63	266.67	93.52
Petro 104983	Super Erecta Shelving Post, 74 1/2" H, adjustable leveling feet, includes and ground at 1" increments and notched at 1/2" increments, should ground every 6". Melbond 3 (corrosion-resistant) finish, 1/2" thick aluminum extruded protection.	10	9.38	93.80	38.00
Petro 103482	Super Erecta Shelf, wire, 12" W, 36" L, Melbond 3 (corrosion-resistant) finish, plastic 3/8" shelves are included in each carton.	9	24.75	222.75	79.00
Petro 104981	1/2" thick 48", 48" on shelving to existing units using two posts instead of four. All includes end/rack and one roller (48", two lbs. required per storage level).	10	3.19	31.90	8.00
Advance Tabco	Work Table, 24" wide top, with splash at rear only, 48" long, melbond/ultra underfoot, s/s frame & shelf, 10 gauge type 304 stainless steel top, 2" melbond/ultra sub-frame.	3	473.60	1,420.80	611.52
Customer Discount				7.75%	4,149.78
Total				46,728.72	22,147.67





## A2QB Product Information

### Requirements

Windows 2000/XP, 256 MB RAM Minimum, 600MHz CPU, Quickbooks™ Pro 2005 or Quickbooks™ 2004 with QBFC 3.0 Update, Autoquotes™.

### Product Features

- ▶ Creates User Defined Accounts in Quickbooks™
- ▶ Imports Customers from Autoquotes™ Estimates into Quickbooks™ Customer and Job Objects. These Item Objects can then be reused at any time from within Quickbooks™.
- ▶ Imports Vendors from Autoquotes™ Estimates into Quickbooks™ as Vendor Objects. These Item Objects can then be reused at any time from within Quickbooks™.
- ▶ Imports Items from Autoquotes™ Estimates into Quickbooks™ as Item Objects. These Item Objects can then be reused at any time from within Quickbooks™. Also allows for updating of existing Quickbooks™ Item's details each time a new estimate is imported.
- ▶ Imports entire Autoquotes™ Estimate into Quickbooks™ as an Estimate which references Customers, Jobs, Vendors, and Item Objects within Quickbooks™.
- ▶ Automatically generates separate PO's for each Vendor from within Quickbooks™. Each Vendor's PO will contain all of their respective items as identified in the imported estimate.
- ▶ Enables you to define custom fields which will be imported and defined to items within Quickbooks™. You select which column and detail record fields from Autoquotes™ Estimates will populate those fields. Quickbooks™ Estimate Templates may then be modified to display these fields and their data values if you wish (ie. Line Item Numbers).
- ▶ Import new or reference existing Income and Expense (COGS) accounts for items to be associated with.
- ▶ Ability to define and reference applicable Sales Tax to the imported estimate.
- ▶ A handy Autoquotes™ Estimate Viewer provides the ability to view your exported estimate file whenever you choose. Reading the files without this viewer would be almost impossible.
- ▶ Import and Export A2QB settings. Allows you to save all of your settings to a file which can then be backed up. Settings can be imported later if a new install of A2QB is required, restoring you to a working state once again.
- ▶ Results Screen displays what was imported successfully and what was not. A2QB even has a revert feature that allows you to remove any or all items that were imported from an estimate. And an extensive Help interface ensures you've got the assistance required.